

## Specifications:

Parameter	Condition	Limit
<b>Input</b>		
Input Voltage		85 to 264 VAC
Frequency		47 to 63 Hz
Protection		Line Fuse on board
Inrush Current	Cold Start	15 to 60 A Max
<b>Output</b>		
<b>Required Minimum Load</b>	<b>Main Output</b>	<b>10%</b>
Line Regulation	Full Rated Load	±0.5%
Load Regulation	Full Rated Load	±1% Single Output ±2% Main Output
Cross Regulation	Full Rated Load	5% Typical
Temp. Coefficient		±0.04%/ °C
Hold up Time		10 mS min.
Overvoltage Protection	#1 Output	112 to 132% of Nominal
Output Ripple		2% peak to peak max.

<b>General</b>		
Operating Temperature	Full Rated Load	0 to 50°C
Storage Temperature		-20 to +85°C
Efficiency	Full Rated Load	65% min.
MTBF	Per MIL-HDBK-217E	100,000 hour
Shock & Vibration		Designed to meet MIL-STD 810C
EMI		FCC20780 Level B & VDE 0871 Level A
Safety	All Models	UL 1950, CSA C22.2 No. 234, EN 60950
Cooling	Full Load	Convection Cooling 200 W units have an internal fan

### Mating Connector Kits

- Can be ordered separately for units with Molex connection.
- Used for input and output connection (applies to 40, 65, 110 watt units).
  - o Kits include mating housing and pins for input and output connection:
    - GL40-KIT
    - GL65-KIT
    - GL110-KIT
- Use for auxiliary signal connector only (200 watt units)
  - GL200-KIT

## Selection Table for 200 Watt, GL Series:

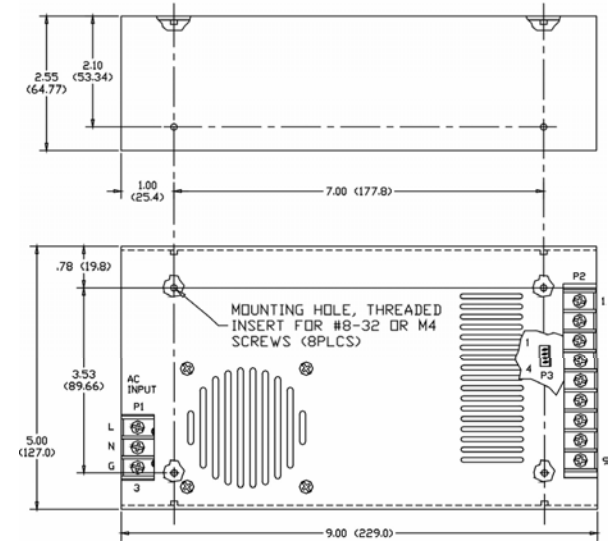
Catalog Number	Output 1	Output 2	Output 3	Output 4	Maximum Output
GLS-01-200	5 V, 40 A	-	-	-	200 W
GLS-02-200	12 V, 16.7 A	-	-	-	200 W
GLS-03-200	15 V, 13.4 A	-	-	-	200 W
GLS-04-200	24 V, 8.4 A	-	-	-	200 W
GLD-01-200	5 V, 30 A	12 V, 8 A	-	-	200 W
GLD-02-200	5 V, 30 A	15 V, 6 A	-	-	200 W
GLD-03-200	5 V, 30 A	24 V, 4 A	-	-	200 W
GLT-01-200	5 V, 30 A	12 V, 8 A	-5 V, 6 A	-	200 W
GLT-02-200	5 V, 30 A	12 V, 8 A	-12 V, 4 A	-	200 W
GLT-03-200	5 V, 30 A	15 V, 6 A	-15 V, 4 A	-	200 W
GLT-04-200	5 V, 30 A	15 V, 6 A	-12 V, 4 A	-	200 W
GLQ-01-200	5 V, 30 A	12 V, 8 A	-12 V, 4 A	5 V, 6 A	200 W
GLQ-02-200	5 V, 30 A	15 V, 6 A	-15 V, 4 A	24 V, 4 A	200 W
GLQ-03-200	5 V, 30 A	12 V, 8 A	-12 V, 4 A	12 V, 4 A	200 W
GLQ-04-200	5 V, 30 A	12 V, 8 A	-15 V, 4 A	15 V, 4 A	200 W
GLQ-05-200	5 V, 30 A	12 V, 8 A	-12 V, 4 A	24 V, 4 A	200 W

### Output Connector (Terminal Block):

Model	Pin 1-2	Pin 3-4-5	Pin 6	Pin 7	Pin 8	Pin 9
GLS	- Sense	Return	Output 1	Output 1	Output 1	+Sense
GLD	Output 1	Common	Output 2	N/A	N/A	N/A
GLT	Output 1	Common	Output 2	Output 3	N/A	N/A
GLQ	Output 1	Common	Output 2	Output 3	Output 4 Return	Output 4

### Auxiliary Signal Connector:

Model	Pin 1	Pin 2	Pin 3	Pin 4
All Models	Fan	Common	Common	PFD



#### Notes:

1. Tolerance 0.02/0.5 maximum.
2. Input connector P1 and output connector P2 equipped with #6-32 screws on 0.375-inch centers.
3. Connectors P3 mates with Molex housing 22-01-1043 and Molex 4809 series crimp terminal.
4. Weight: 3.9 lbs. (1,750 grams) approx.
5. Input/Output Mating Connector kit available. Catalog number GL110-KIT.
6. All dimensions in inches (mm).



## GL Series Power Supplies

Single and Multi Output Switchers

GL 40  
GL 65  
GL 110  
GL 200

### Technical Services

USA (800) 377-4384  
International (847) 268-6000  
Email [tech@sola-hevi-duty.com](mailto:tech@sola-hevi-duty.com)

[www.solaheviduty.com](http://www.solaheviduty.com)

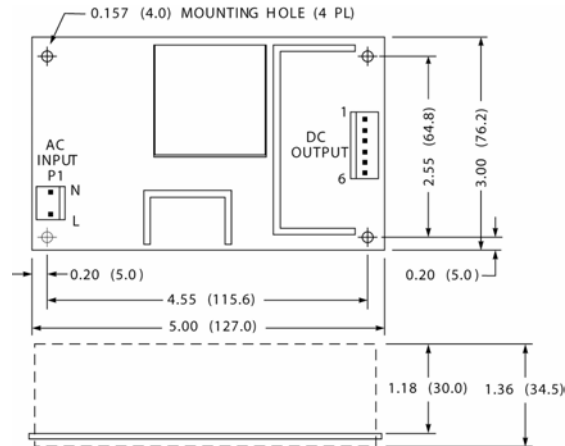
Rev. 03/24/05

**Selection Table for 40 Watt, GL Series:**

Catalog Number	Output 1	Output 2	Output 3	Maximum Output
GLS-01-040	5 V, 6A	-	-	30 W
GLS-02-040	12 V, 3.5 A	-	-	40 W
GLS-03-040	15 V, 3A	-	-	40 W
GLS-04-040	24 V, 2 A	-	-	40 W
GLD-01-040	5 V, 3 A	12 V, 2 A	-	40 W
GLD-02-040	5 V, 3 A	15 V, 2 A	-	40 W
GLD-03-040	5 V, 3 A	24 V, 1 A	-	40 W
GLT-01-040	5 V, 3 A	12 V, 2 A	-5 V, 0.3 A	40 W
GLT-02-040	5 V, 3 A	12 V, 2 A	-12 V, 0.3 A	40 W
GLT-03-040	5 V, 3 A	15 V, 2 A	-15 V, 0.3 A	40 W
GLT-04-040	5 V, 3 A	15 V, 2 A	-12 V, 0.3 A	40 W
GLT-05-040	5 V, 3 A	24 V, 1 A	-12 V, 0.3 A	40 W

**Output Connector:**

Model	Pin 1	Pin 2	Pin 3	Pin 4	Pin 5	Pin 6
GLS	Output 1	Output 1	Output 1	Return	Return	Return
GLD	Output 2	Output 1	Output 1	Common	Common	N/A
GLT	Output 2	Output 1	Output 1	Common	Common	Output 3



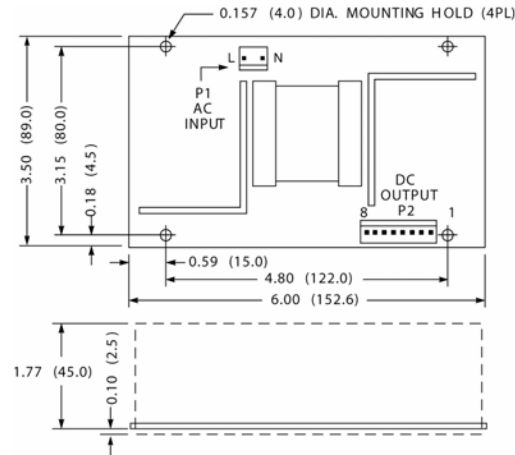
- Notes:
1. Tolerance 0.02/0.5 maximum.
  2. Input connector mates with Molex housing 09-50-3031 and Molex 63811-2200 series crimp terminal.
  3. Output connector mates with Molex housing 09-50-3061 and Molex 63811-2200 series crimp terminal.
  4. Weight: 10.6 oz. (300 grams) approx.
  5. Input/Output Mating Connector kit available. Catalog number GL40-KIT.
  6. All dimensions in inches (mm).

**Selection Table for 65 Watt, GL Series:**

Catalog Number	Output 1	Output 2	Output 3	Output 4	Maximum Output
GLS-01-065	5 V, 10 A	-	-	-	50 W
GLS-02-065	12 V, 5.5 A	-	-	-	65 W
GLS-03-065	15 V, 4.5 A	-	-	-	65 W
GLS-04-065	24 V, 3 A	-	-	-	65 W
GLD-01-065	5 V, 6 A	12 V, 3 A	-	-	65 W
GLD-02-065	5 V, 6 A	15 V, 3 A	-	-	65 W
GLD-03-065	5 V, 6 A	24 V, 2 A	-	-	65 W
GLT-01-065	5 V, 6 A	12 V, 3 A	-5 V, 0.5 A	-	65 W
GLT-02-065	5 V, 6 A	12 V, 3 A	-12 V, 0.5 A	-	65 W
GLT-03-065	5 V, 6 A	15 V, 3 A	-15 V, 0.5 A	-	65 W
GLT-04-065	5 V, 6 A	15 V, 3 A	-12 V, 0.5 A	-	65 W
GLT-05-065	5 V, 6 A	24 V, 2 A	-12 V, 0.5 A	-	65 W
GLQ-01-065	5 V, 6 A	12 V, 3 A	-12 V, 0.5 A	-5 V, 0.5 A	65 W

**Output Connector:**

Model	Pin 1	Pin 2	Pin 3	Pin 4	Pin 5	Pin 6	Pin 7	Pin 8
GLS	Output 1	Output 1	Output 1	Output 1	Return	Return	Return	Return
GLD	Output 1	Output 1	Common	Common	Output 2	Output 2	N/A	N/A
GLT	Output 1	Output 1	Common	Common	Output 2	Output 2	Output 3	N/A
GLQ	Output 1	Output 1	Common	Common	Output 2	Output 2	Output 3	Output 4



- Notes:
1. Tolerance 0.02/0.5 maximum.
  2. Input connector mates with Molex housing 09-50-3031 and Molex 63811-2200 series crimp terminal.
  3. Output connector mates with Molex housing 09-50-3081 and Molex 63811-2200 series crimp terminal.
  4. Weight: 13.4 oz. (380 grams) approx.
  5. Input/Output Mating Connector kit available. Catalog number GL65-KIT.
  6. All dimensions in inches (mm).

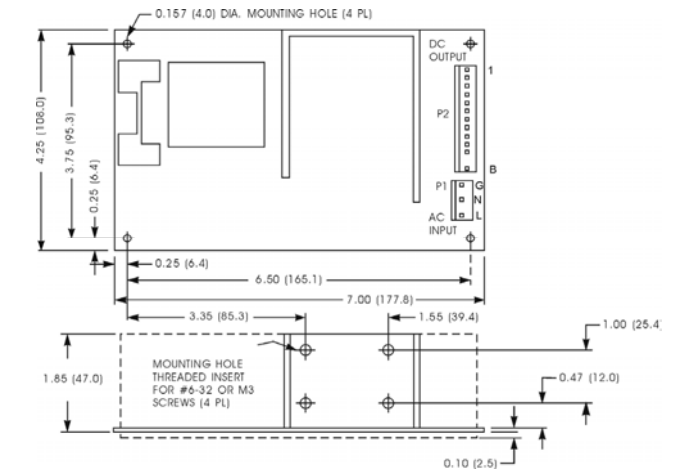
**Selection Table for 110 Watt, GL Series:**

Catalog Number	Output 1	Output 2	Output 3	Output 4	Maximum Output*
GLS-01-110	5 V, 22 A	-	-	-	110 W
GLS-02-110	12 V, 9 A	-	-	-	110 W
GLS-03-110	15 V, 7.5 A	-	-	-	110 W
GLS-04-110	24 V, 4.5 A	-	-	-	110 W
GLD-01-110	5 V, 10 A	12 V, 5 A	-	-	110 W
GLT-01-110	5 V, 10 A	12 V, 3 A	-12 V, 1 A	-	110 W
GLT-02-110	5 V, 10 A	15 V, 4 A	-15 V, 1 A	-	110 W
GLQ-01-110	5 V, 10 A	12 V, 5 A	-12 V, 1 A	-5 V, 1 A	110 W
GLQ-02-110	5 V, 10 A	12 V, 5 A	-12 V, 1 A	+12 V, 1 A	110 W
GLQ-03-110	5 V, 10 A	12 V, 5 A	-12 V, 1 A	+24 V, 1 A	110 W
GLQ-04-110	5 V, 10 A	15 V, 4 A	-15 V, 1 A	-5 V, 1 A	110 W

\* With 25 CFM airflow, 80 W with convection cooling.

**Output Connector:**

Model	Pin 1-2-3	Pin 4-5	Pin 6-7	Pin 8-9	Pin 10	Pin 11	Pin 12	Pin 13
GLS	Output 1	Return	Return	Output 1	Power Fail	N/A	Key	N/A
GLD	Output 1	Common	Common	Output 2	Power Fail	N/A	Key	N/A
GLT	Output 1	Common	Common	Output 2	Power Fail	Output 3	Key	N/A
GLQ	Output 1	Common	Common	Output 2	Power Fail	Output 3	Key	Output 4



- Notes:
1. Tolerance 0.02/0.5 maximum.
  2. Input connector mates with Molex housing 09-50-3051 and Molex 63811-2200 series crimp terminal.
  3. Output connector mates with Molex housing 09-50-3131 and Molex 63811-2200 series crimp terminal.
  4. Weight: 1.32 lbs. (600 grams) approx.
  5. Input/Output Mating Connector kit available. Catalog number GL110-KIT.
  6. All dimensions in inches (mm).